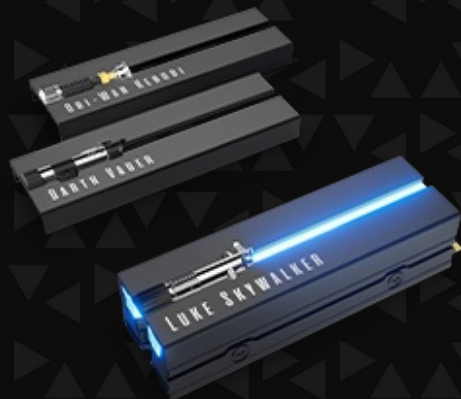


Choose Your Side of the Force



## Lightsaber Collection Special Edition FireCuda PCIe Gen4 NVMe SSD

### Choose Your Side of the Force

Prepare for battle with the officially licensed Lightsaber™ Collection Special Edition FireCuda® PCIe Gen4 NVMe SSD. A low-profile heatsink helps dissipate heat and reduce thermal throttling, while you harness up to 7,300 MB/s of speed that this SSD has pulsing inside. Swap between three iconic lightsaber faceplates — Obi-Wan Kenobi™, Darth Vader™, and Luke Skywalker™ — thanks to a one-of-kind interchangeable design.



## Key Features

### Feel the Force

Features three officially licensed and iconic lightsaber designs — Obi-Wan Kenobi, Darth Vader, and Luke Skywalker.

### Interchangeable Design

A one-of-kind design lets you swap out which faceplate fits your collection at any moment.\*

\*Heatsink can exceed standard M.2 specs.

Verify system has space for installation at

[www.seagate.com](http://www.seagate.com)

### A Powerful Glow

Customisable RGB LED lighting brings a galaxy of atmosphere to your drive.\*

\*Motherboard with 5V addressable header required for RGB LED light functionality.

# Choose Your Side of the Force



## Fulfil Your Destiny

Accumulate an array of media, files, and games with up to 2 TB of formidable capacity.

## Cool Speed Ahead

Custom heatsink helps minimise thermal throttling and maintain peak performance for longer periods of time.

## We've Got Your Back

When the unexpected happens — like water damage or natural disaster — Rescue Services help you defend against data loss and retrieval costs so you can rest easier.

LIGHTSABER COLLECTION SPECIAL EDITION FIRECUDA PCIE GEN4 NVME SSD



RETAIL PACKAGING	BOX DIMENSIONS	MASTER CARTON DIMENSIONS	PALLET DIMENSIONS
Length (in/mm)	6.181 in/157 mm	10.709 in/272 mm	47.992 in/1219 mm
Width (in/mm)	6.102 in/155 mm	7.48 in/190 mm	40 in/1016 mm
Depth (in/mm)	0.906 in/23 mm	9.134 in/232 mm	41.22 in/1047 mm
Weight (lb/kg)	0.419 lb/0.19 kg	5.379 lb/2.44 kg	460.766 lb/209 kg

QUANTITIES	
Boxes per Master Carton	10
Master Cartons per Pallet	80
Pallet Layers	4

SYSTEM REQUIREMENTS	WHAT'S INCLUDED
<ul style="list-style-type: none"><li>M.2 (M key) slot, PCIe® Gen4x4 interface (backwards compatible with PCIe Gen3 and PCIe Gen5 interfaces)</li><li>Windows® 10 , Windows® 11</li><li>Linux</li><li>Motherboard with 5V addressable header (for RGB LED light functionality)</li></ul>	<ul style="list-style-type: none"><li>Lightsaber Legends Special Edition FireCuda PCIe Gen4 NVMe SSD</li><li>RGB LED connector cable 40 cm</li><li>Quick start guide</li></ul>

REGION	MODEL NUMBER	CAPACITY	LIMITED WARRANTY (YEARS)	UPC CODE	EAN CODE	MULTI-PACK UPC
WW	ZP1000GM3A053	1TB	5	763649174548	8719706430814	10763649174545
WW	ZP2000GM3A033	2TB	5	763649174555	8719706430821	10763649174552

1 Heatsink can exceed standard M.2 specs. Verify system has space for installation at [www.seagate.com](http://www.seagate.com)  
2 Motherboard with 5V addressable header required for RGB LED light functionality.

# Choose Your Side of the Force

## LIGHTSABER COLLECTION SPECIAL EDITION FIRECUDA PCIE GEN4 NVME SSD

SPECIFICATIONS	2TB	1TB
Standard Model	ZP2000GM30033	ZP1000GM30053
Interface	PCIe Gen4 x4 NVMe 1.4	PCIe Gen4 x4 NVMe 1.4
NAND Flash Memory	3D TLC	3D TLC
Form Factor	M.2 2280 with heatsink <sup>1</sup>	M.2 2280 with heatsink <sup>1</sup>
PERFORMANCE		
Sequential Read (Max, MB/s), 128KB <sup>2</sup>	7300MB/s	7300MB/s
Sequential Write (Max, MB/s), 128KB <sup>2</sup>	6,900	6,000
Random Read (Max, IOPS), 4 KB QD32 T8 <sup>2</sup>	1000000IOPS	800000IOPS
Random Write (Max, IOPS), 4 KB QD32 T8 <sup>2</sup>	1,000,000	1,000,000
ENDURANCE/RELIABILITY		
Total Bytes Written (TB)	2,550	1,275
Mean Time Between Failures (MTBF, hours)	1800000 hr	1800000 hr
Rescue Data Recovery Services (years) <sup>3</sup>	3	3
Warranty, Limited (years)	5	5
POWER MANAGEMENT		
Active Power, Average (W)	7.8 W	6.3 W
Idle Power PS3, Average (mW)	25 W	20 W
Low Power L1.2 mode (mW)	<5	<5
ENVIRONMENTAL		
Temperature, Operating Internal (°C)	0°C – 70°C	0°C – 70°C
Temperature, Non-operating (°C)	-40°C – 85°C	-40°C – 85°C
Shock, Non-operating: 0.5 ms (Gs)	1500 Gs	1500 Gs
SPECIAL FEATURES		
TRIM	Yes	Yes
S.M.A.R.T.	Yes	Yes
Halogen-free	Yes	Yes
RoHS compliance	Yes	Yes
PHYSICAL		
Length (mm/in, max)	80.15 mm/3.155 in	80.15 mm/3.155 in
Width (mm/in, max)	25.0 mm/0.984 in	25.0 mm/0.984 in
Height (mm/in, max)	19.0 mm/0.748 in	19.0 mm/0.748 in
Weight (lb/g)	47 g/0.104 lb	47 g/0.104 lb

1 Please verify that your system provides enough space for installation. The FireCuda 530 with heatsink exceeds dimensions of a standard M.2 2280 form factor. Heatsink is pre-installed and should not be removed as it can damage the SSD.

2 Fresh out of box (FOB) performance obtained on newly formatted drive. Performance may vary based on SSD's firmware version, system hardware, and configuration. Performance based on CrystalDiskMark v.7.0.0 x64 on Windows 10 host with PCIe Gen4 motherboard.

3 Rescue Data Recovery Services not available in all countries.