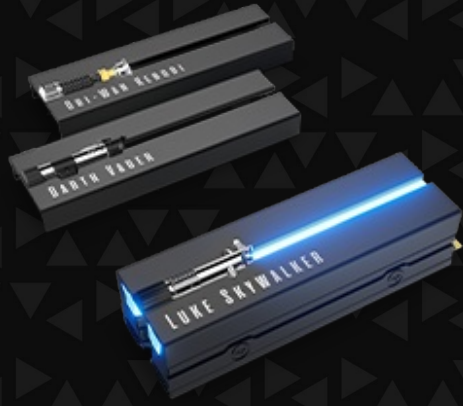


Choose Your Side of the Force



Lightsaber Collection Special Edition FireCuda PCIe Gen4 NVMe SSD

Choose Your Side of the Force

Prepare for battle with the officially licensed Lightsaber™ Collection Special Edition FireCuda® PCIe Gen4 NVMe SSD. A custom heatsink helps dissipate heat and reduce thermal throttling, while you harness up to 7,300 MB/s of speed that this SSD has pulsing inside. Swap between three iconic lightsaber faceplates — Obi-Wan Kenobi™, Darth Vader™, and Luke Skywalker™ — thanks to a one-of-kind interchangeable design.



Key Features

Feel the Force

Features three officially licensed and iconic lightsaber designs — Obi-Wan Kenobi, Darth Vader and Luke Skywalker.

Interchangeable Design

A one-of-kind design lets you swap out which faceplate fits your collection at any moment.*

*Heatsink can exceed standard M.2 specs.

Verify system has space for installation at

www.seagate.com

A Powerful Glow

Customisable RGB LED lighting brings a galaxy of atmosphere to your drive.*

*Motherboard with 5V addressable header required for RGB LED light functionality.

Choose Your Side of the Force



Fulfil Your Destiny

Accumulate an array of media, files, and games with up to 2 TB of formidable capacity.

Cool Speed Ahead

Custom heatsink helps minimize thermal throttling and maintain peak performance for longer periods of time.

We've Got Your Back

When the unexpected happens — like water damage or natural disaster — Rescue Services help you defend against data loss and retrieval costs so you can rest easier.

LIGHTSABER COLLECTION SPECIAL EDITION FIRECUDA PCIE GEN4 NVME SSD



RETAIL PACKAGING	BOX DIMENSIONS	MASTER CARTON DIMENSIONS	PALLET DIMENSIONS
Length (in/mm)	6.181 in/157 mm	10.709 in/272 mm	47.992 in/1,219 mm
Width (in/mm)	6.102 in/155 mm	7.48 in/190 mm	40 in/1,016 mm
Depth (in/mm)	0.906 in/23 mm	9.134 in/232 mm	41.22 in/1,047 mm
Weight (lb/kg)	0.419 lb/0.19 kg	5.379 lb/2.44 kg	460.766 lb/209 kg

QUANTITIES	
Boxes per Master Carton	10
Master Cartons per Pallet	80
Pallet Layers	4

SYSTEM REQUIREMENTS	WHAT'S INCLUDED
<ul style="list-style-type: none">• M.2 (M key) slot, PCIe® Gen4×4 interface (backwards compatible with PCIe Gen3 and PCIe Gen5 interfaces)• Windows® 10 , Windows® 11• Linux• Motherboard with 5V addressable header (for RGB LED light functionality)	<ul style="list-style-type: none">• Lightsaber Legends Special Edition FireCuda PCIe Gen4 NVMe SSD• RGB LED connector cable 40 cm• Quick start guide

REGION	MODEL NUMBER	CAPACITY	LIMITED WARRANTY (YEARS)	UPC CODE	EAN CODE	MULTI-PACK UPC
WW	ZP1000GM3A053	1 TB	5	763649174548	8719706430814	10763649174545
WW	ZP2000GM3A033	2 TB	5	763649174555	8719706430821	10763649174552

Choose Your Side of the Force

LIGHTSABER COLLECTION SPECIAL EDITION FIRECUDA PCIE GEN4 NVME SSD

SPECIFICATIONS	2 TB	1 TB
Standard Model	ZP2000GM30033	ZP1000GM30053
Interface	PCIe Gen4 x4 NVMe 1.4	PCIe Gen4 x4 NVMe 1.4
NAND Flash Memory	3D TLC	3D TLC
Form Factor	M.2 2280 with heatsink ¹	M.2 2280 with heatsink ¹
PERFORMANCE		
Sequential Read (Max, MB/s), 128KB ²	7,300	7,300
Sequential Write (Max, MB/s), 128KB ²	6,900	6,000
Random Read (Max, IOPS), 4 KB QD32 T8 ²	1,000,000	800,000
Random Write (Max, IOPS), 4 KB QD32 T8 ²	1,000,000	1,000,000
ENDURANCE/RELIABILITY		
Total Bytes Written (TB)	2550	1275
Mean Time Between Failures (MTBF, hours)	1,800,000	1,800,000
Rescue Data Recovery Services (years) ³	3	3
Warranty, Limited (years)	5	5
POWER MANAGEMENT		
Active Power, Average (W)	7.8	6.3
Idle Power PS3, Average (mW)	25	20
Low Power L1.2 mode (mW)	<5	<5
ENVIRONMENTAL		
Temperature, Operating Internal (°C)	0°C – 70°C	0°C – 70°C
Temperature, Non-operating (°C)	-40°C – 85°C	-40°C – 85°C
Shock, Non-operating: 0.5 ms (Gs)	1,500	1,500
SPECIAL FEATURES		
TRIM	Yes	Yes
S.M.A.R.T.	Yes	Yes
Halogen-free	Yes	Yes
RoHS compliance	Yes	Yes
PHYSICAL		
Length (mm/in, max)	80.15 mm/3.155 in	80.15 mm/3.155 in
Width (mm/in, max)	25 mm/0.984 in	25 mm/0.984 in
Height (mm/in, max)	19 mm/0.748 in	19 mm/0.748 in
Weight (lb/g)	47 g/0.104 lb	47 g/0.104 lb

¹ Please verify that your system provides enough space for installation. The FireCuda 530 with heatsink exceeds dimensions of a standard M.2 2280 form factor. Heatsink is pre-installed and should not be removed as it can damage the SSD.

² Fresh out of box (FOB) performance obtained on newly formatted drive. Performance may vary based on SSD's firmware version, system hardware, and configuration. Performance based on CrystalDiskMark v.7.0.0 x64 on Windows 10 host with PCIe Gen4 motherboard.

³ Rescue Data Recovery Services not available in all countries.

SEAGATE.COM

© 2022 Seagate Technology LLC. All rights reserved. Seagate, Seagate Technology, and the Spiral logo are registered trademarks of Seagate Technology LLC in the United States and/or other countries. FireCuda and the FireCuda logo are either trademarks or registered trademarks of Seagate Technology LLC or one of its affiliated companies in the United States and/or other countries. The PCIe word mark and/or PCIExpress design mark are registered trademarks and/or service marks of PCI-SIG. All other trademarks or registered trademarks are the property of their respective owners. When referring to drive capacity, one gigabyte, or GB, equals one billion bytes and one terabyte, or TB, equals one trillion bytes. Your computer's operating system may use a different standard of measurement and report a lower capacity. In addition, some of the listed capacity is used for formatting and other functions, and thus will not be available for data storage. Actual data rates may vary depending on operating environment and other factors, such as chosen interface and drive capacity. Seagate reserves the right to change, without notice, product offerings or specifications. DS2108.2-2209 GB